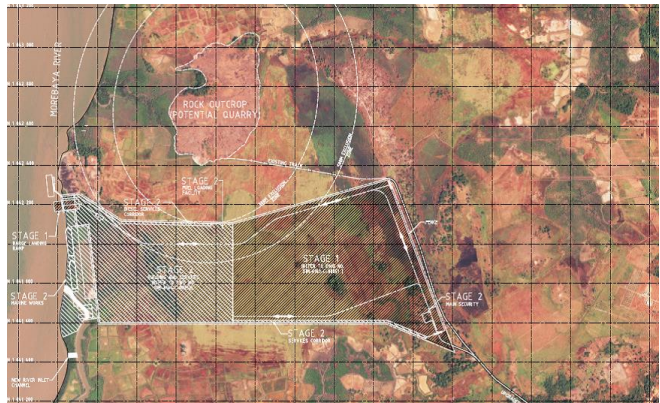
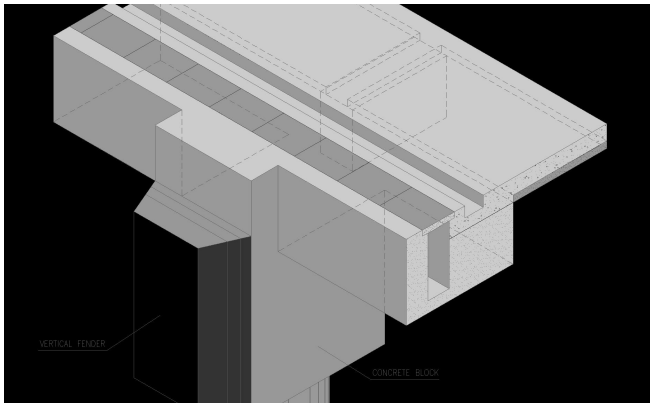




Engineering Structures for Life



TRANSPORTS - PORTS

Pioneering Marine Off-Loading Facility – Simandou Stage 2

ABOUT

The phase 2 of PMOF (Pioneering Marine Off-Loading Facility), located at the bank of Morebaya River, integrates the Simandou Project. Simandou Project is a Rio Tinto world-scale iron ore mining project located in Guinea Forrestière (Forested Guinea) and Haute Guinea (Upper Guinea) regions.

The PMOF integrates the Early Works programme, with the aim to enable the import of goods and materials for the main construction phase, which includes a new dedicated deep-water port, a multi-user trans-Guinean bulk railway and several other infrastructures and facilities (including a combination of new roads and upgrade of existing roads).

Marine facilities comprise a Barge landing ramp, laydown areas, Heavy Lift Cargo berths, Roll-on Roll-off (RO/RO) berths, construction camps and Fuel Barge berths. On board cranes on heavy lift cargo vessels will be used to unload from these vessels to the wharf area.

The dry area facilities comprise infrastructure & services, buildings, mechanical, electrical and instrumentation, communication and controls to support the functioning of the PMOF.

GEG’s scope of work was to develop the value engineering studies and the complete preliminary design in the referred facilities, of the following disciplines: structural design, wharf design, electrical, mechanical and hydraulic design, pavement design, safety and security design.

An additional alternative solution was presented for the wharf facilities with precast concrete elements.

FACTS

Year: 2012

Client: Odebrecht

Services: Conceptual design, Structural Engineering, Mechanical, Electrical and Plumbing design, Pavement design, Study of alternative solutions, Port engineering design, Health and safety study, Value Engineering, Coordination of the engineering disciplines

TEAM

Miguel Domingues
Pedro Pereira

LOCATION

Conacri, Guinea